



Calshot
Primary School

EYFS INDUCTION INFORMATION

CHILDREN STARTING IN

NURSERY

CONTACT US

0121 675 1059

www.calshot.bham.sch.uk

enquiry@calshot.bham.sch.uk



Introduction

Each child's development is unique and special. At Calshot Nursery we aim to provide a caring and stimulating environment that will enable your child to progress and reach his/her full potential.

We recognise the crucial role that you, the parents/carers, play in the education of your child and value your support in helping to establish strong links between home and school.

We hope that we can begin to form strong home/school links by using this Induction Pack.

We would be grateful if you could spend some time with your child looking through the pack in the weeks leading up to the start of the Nursery year.

For some children the thought of starting Nursery can be a little daunting. We aim to make your child's first taste of school life as enjoyable as possible and plan to do this by creating a feeling of familiarity by using this pack.

Settling In Process

During the first two weeks in September your child will start Nursery. We stagger the children's start dates and times so staff can get to know the children and to help them to feel happy and secure in their new environment.

Talk to your children about them starting Nursery and reassure them that you will come back to pick them up at the end of the session.

When you drop your child off at Nursery is it normal for them to be upset and worried. Please promptly say goodbye to them and encourage them to go into the Nursery with their teacher.

If your child is very distressed we will call you and ask you to collect your child. The Nursery staff will then discuss a settling in plan with you.

If you are worried please call the School Office on **0121 675 1059** your call will be put through to a member of Nursery Staff who will be able to discuss how your child has settled.

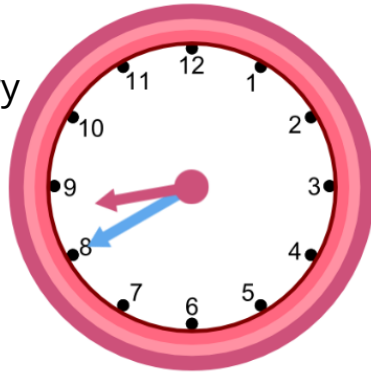
Please ensure you bring your child everyday even if they are upset as regular attendance is key to helping your child settle into Nursery.

Nursery Session Times

Your child has been allocated **either** a morning, an afternoon place or if you are eligible for funding a full time place.
Please find the times for each session below.

Morning Nursery - Butterflies Class

Our morning Nursery session begins at **8.40 am**

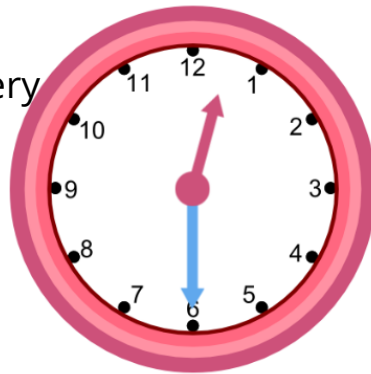


We go home at **11.40 am**



Afternoon Nursery - Ladybirds Class

Our afternoon Nursery session begins at **12.30 pm**



We go home at **3.30 pm**



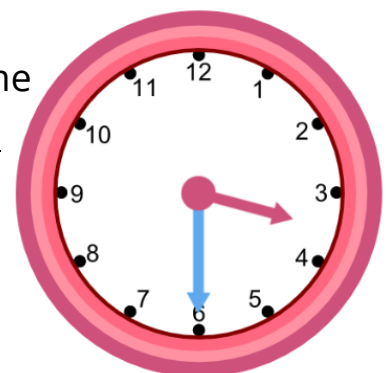
Full Time - Bumblebees Class

Our day begins at **8:40 am**

Please note full time places are available for those eligible for 30 hours funding. There is a fee payable for the lunchtime period.



We go home at **3.30 pm**



Please ensure children arrive at school and are collected on time.

The Nursery gate is locked 10 minutes after these times for the safety of the children.

If you are late you will need to go to the Main School Office. Children arriving late miss important activity introductions and crucial learning time.

Personal Child Health Record (red book) **and Two Year Old Check**

On your child's Induction Day at Nursery please bring in your child's red book for the Nursery staff to look at. This will ensure that Nursery staff are aware of any health or developmental concerns and are able to ensure we can meet your child's needs.

By now your child should have had their Two Year Old Check with a Health Visitor. **If any concerns were raised during this check please share this with the Nursery teacher.** This will help us to assess how we can best support your child and if any additional support from other agencies is needed.

If your child has not had this check or you are concerned about their development please ring your Health Visiting Team.



Most of our families will come under the Perry Barr North Health Visiting Team, please call them on 0121 465 5505. If you are unsure which team you come under check your child's red book or ring the Perry Barr North Team who will be able to assist you.

EYFS Areas of Learning

We cover seven areas of learning within Nursery and Reception through a range of topics. Below are the areas of learning we cover and the topics that are covered each term.

<u>Three Prime Areas</u>			
Communication and Language	Personal, Social and Emotional Development	Physical Development	
<u>Four Specific Areas</u>			
Literacy	Mathematical Development	Understanding the World	Expressive Arts and Design

Our Topics

Further information about our topics can be found on our school website.
www.calshot.bham.sch.uk/our-school/curriculum/nursery-curriculum/

Autumn 1 - During our first half term our topic is:

'Getting to Know You.'



Autumn 2 - During our second half term our topics is:

'Celebrations.'



Spring 1 and 2 - Our topic during the Spring term is:

'What a Wonderful World!'



Summer 1 - Our first topic during the Summer term is:

'Animals'.



Summer 2 - Our second topic during the Summer term is:

'Growing.'



Our Uniform

Please share these pages with your child prior to their first day in Nursery.

Boys should wear grey trousers, a white polo shirt and a red Calshot school jumper and girls should wear a skirt, dress or trousers and a white polo shirt with a red Calshot school jumper or cardigan.



Your School Bag

You will need it everyday to put all of your paintings, drawings and letters in. Please do not send your child with a rucksack style bag.

Please ensure children wear clothes that they are able to go to the toilet in. Please ensure trousers have an elastic waist and not a clasp or button as these are difficult for the children to fasten and unfasten.

Water Bottles

During the Nursery session children are able to freely access water to drink. On your child's first day please bring a named bottle which will then be kept in Nursery to be washed and refilled with fresh water daily.

Please ensure bottles are free flowing and do not have a straw so they can be easily washed.



Newsletters and Parent Mail

Once all of the children have started Nursery you will be sent a link to set up your free Parent Mail account.

Please ensure you sign up to the app as important information is shared using the app. Please ensure you also access the school website regularly for important dates and updates. Each week we upload a new newsletter with an insight into what's going on at the school.

Please visit <https://calshot.bham.sch.uk/parents/newsletters/>



Welcome to Nursery

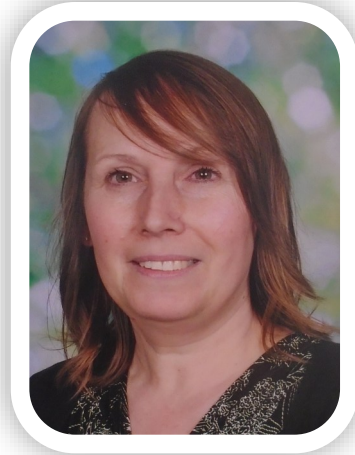
Please share these pages with your child prior to their first day in Nursery.

Nursery Staff

This is
Miss Sweet



This is
Mrs Sheargold



Coming to Nursery

When you come to Nursery you will have a peg with your picture and name on to hang your bag and coat up.



It's time to say goodbye to your grown up, remember they will be back for you really soon!

Our Learning Environment

Nursery has lots of places to choose to play and learn. You could play in the sand or water, build, play in the home corner, write, draw or use the playdough.



Our Toilets

Our toilets are smaller and especially for children. On your first day we will show you where the toilets are, so you know where to go to wash your hands or use the toilet.



If you have any concerns about toileting, please do not hesitate to speak to a member of Nursery Staff.

Outdoor Area

You will be able to play outside, we have bikes, scooters, a slide and lots of outdoor toys.

You can practise running, jumping and balancing.



Please bring some wellies to Nursery and make sure you have warm clothes if the weather is cold, we will go outside every week for Outdoor Learning.

Ready for Nursery!

At Nursery we encourage the children to be independent. Here are some things you can practise at home to help your child with the 'settling in' process when he or she starts Nursery. Below are some skills that would be useful for your child. You may choose to print this page and tick or colour each one together when your child is beginning to be able to do each one.

Please advise a member of staff if your child is not yet confident using the toilet. If your child wets or soils himself or herself, we have spare clothes available. If you wish to send your child with spare clothes each day you are welcome to.

Please ensure any spare clothes your child is sent home in are washed and returned to Nursery as soon as possible.



Put on my coat.



Put on my shoes.



Use a spoon.



Help to get myself dressed.



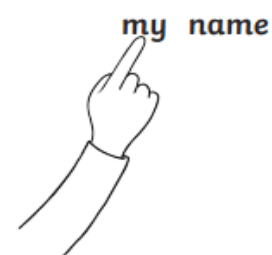
Wash and dry my hands.



Say when I need to use the toilet.



Help to get myself undressed.



Recognise my name.

Frequently Asked Questions

What happens if my child is unwell ?

If your child is unwell please inform school on the first day by telephone. If your child suffers from sickness and/or diarrhoea they should not return to school until **48 hours** have lapsed since the last bout of illness.

Does my child need a PE kit?

We will not begin PE lessons until all of the children are completely settled. When the children are settled, we will give plenty of notice before any PE sessions commence.

How often do I need to bring their book bag to school?

Your child will need to bring their book bag to school **every day**. Please do not send your child with a large bag or rucksack where possible as space is limited.



What is School Fund?

Budgets within schools are very limited. School fund is **50p per week**. This can be paid weekly or half termly. This money allows us to buy extra things for the children e.g. cooking ingredients. Please ensure that any money sent into school is in a named envelope.

Can I go on holiday in Term Time?

Holidays in term time will not be authorised by the Head Teacher. If your child needs time off during term time please complete a Leave of Absence Form. These are available at the school office.

When can I speak to my child's teacher?

If you have any questions or queries for the safety of the children please wait until your child's teacher has dismissed all of the children, then they will be happy to speak to you and answer any questions or queries you may have.

If my child was upset when I left will I be contacted during the session with an update?

Nursery children can sometimes be a little tearful while they are getting used to their new setting and settling in, this is not uncommon and the children usually settle very quickly and enjoy the activities available to them and enjoy building friendships with their peers but we understand this can be worrying for parents and carers. If your child has struggled to settle for a sustained period of time your child's teacher will contact you, you are also welcome to telephone the Main School Office for an update during the session if you wish.